



SOFTWARE

VISION5

Display and calibration tool

Description

VISION4 provides a flexible control interface for electronic devices based on the Magneti Marelli Competition communication protocol.

After opening the configuration file, Vision allows the access to a set of channels resulting from real time ECUs calculations.

Different kind of windows can be included in the screen layout in order to support both read and write operations. The display screen may be customized, adapted to the context and saved: VISION5 includes DSETUP, a tool for the management of the configuration files.

The ECU calibration can be performed by editing the maps saved in .PTA files. If a potentiometer desk is connected to PC it is possible to start the automatic mapping procedure.

The principal PC-ECU communication links are CAN, 100BaseT Ethernet and RS 232. Moreover VISION5 permits MultiBOX/MultiPC interconnections.

Main Features

- Channels representation in *Display* and *Potentiometer* windows (Read or Read/Write)
- Configurability of screen layout according to the end user preferences (Pages/windows/channels)
- Proprietary communication protocol for a fast and reliable PC-ECU link
- Real time ECUs monitoring
- Mapping ECU
- Calibration tables management tools
- Communication support for additional devices: potentiometer desk, dynamometric bench



Benefits

- Connection via different physical links
- Customisable screen layouts
- Notification of out of range channels
- Support for user-defined diagnostics and alarms
- Real time graphical reproduction of channels
- Graphic editor and compare tools for calibration tables
- Links to external tools (e.g. Excel)
- Compatible with Windows® 98/ME/2000/XP

Typical Applications

In all applications with Magneti Marelli proprietary protocol on board

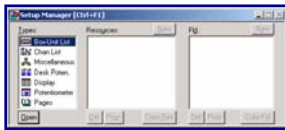
VISION5

Display and calibration tool

Main characteristics

DSetup

DSETUP can either create a new configuration or load an existing configuration for modification.



The configuration file is based on the concepts of *Page/Window/Channel*: the Setup Manager provides all the tools for a flexible layout design.

Display window

The *Display* windows present each channel as a label followed by its instantaneous value, measurement unit and an optional color bar graph. Values are re-read at each refresh cycle.



Potentiometer window



Potentiometer windows display two fields: one field for containing the value read in the electronic device, the other for entering a replacement value, then sent to the electronic device.

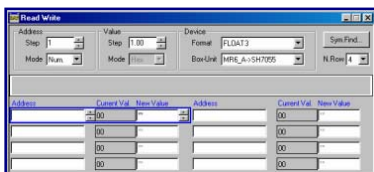
Diagnostic and Alarm window

The *Diagnostic* window displays messages describing the bit mapped diagnostics calculated in the electronic device.

The *Alarm* window displays messages when a channel (from the "Channel List") reaches a value set as an alarm level.

Read/Write window

This window allows the users to *read/write* any software variable allocated in the ECU memory, once protection rules are met.



Oscilloscope

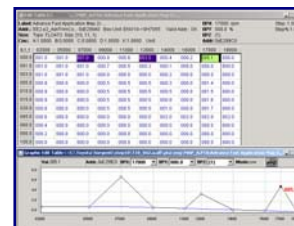
The *Oscilloscope* window allows to show graphically the evolution of the selected channels.



E2PROM configuration

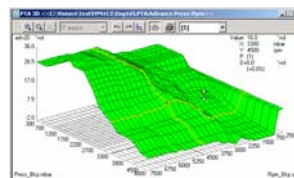


Vision can read and write the full contents of the electronic device's E2PROM to and from *.TAB files.



Another format (.PTA file) is used for browsing and editing the calibration maps resident on partial areas of memory.

You may display the data both in the numerical and in the graphical format; the numerical table and the graphic window are linked: in this way the map values result up-to-date in both representations.



Map presentations are available on 2D and 3D graphs; it is then possible to execute either 2D and 3D tables' comparisons.

Different operations are available on .TAB and .PTA files: read from ECU, write to ECU, modify, compare and print.

Maths channels window

This window shows virtual channels resulting from user defined functions applied to acquired channels.

Minimum PC requirements

- PC x86 running Windows® 98/ME/2000/XP
- One free PCMCIA slot (for CAN card) or Ethernet-TCP/IP network interface or RS 232

For further information, please contact:



Competition Systems Ltd
Hyjuniper, Long Lane
Shaw, Berkshire
RG14 2TA, UK

Tel. +44 (0)8707 444 666
Fax +44 (0)8707 444 888
mail@competitionsystems.co.uk
http://www.competitionsystems.co.uk

May 2010
rel. 01
page 2 of 2